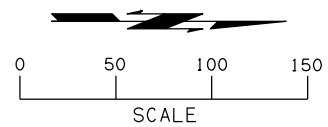


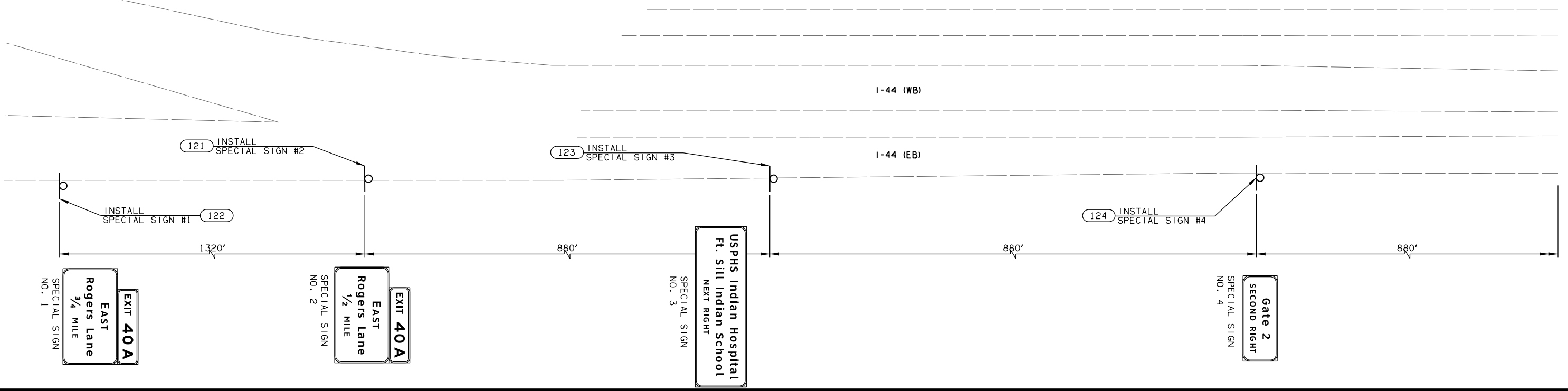
FED. ROAD DIST. NO.	STATE	JOB PIECE NO.	FISCAL YEAR	SHEET NO.	TOTAL SHEETS
6	OKLA.	27050(04)	2017		

DESCRIPTION	REVISIONS	DATE

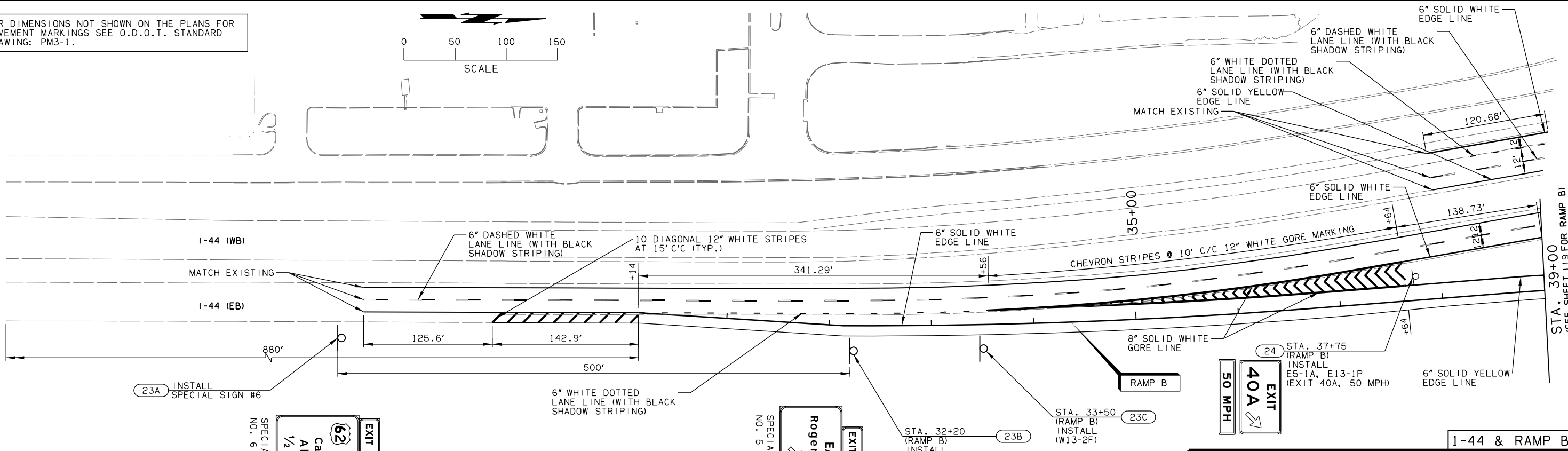
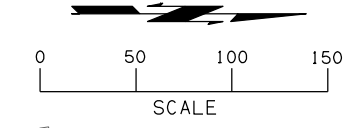


LEGEND	
	TRAFFIC SIGN
	REMOVE SIGN
	SAND FILLED IMPACT ATTENUATOR

- NOTES:
1. ALL MAINLINE STRIPING SHALL BE THE APPROPRIATE COLOR OF EPOXY STRIPE WITH SHADOW STRIPING TO BE PAID FOR AS 856(A) TRAFFIC STRIPE (MULTIPOLYMER). ALL STRIPING SHALL BE MULTIPOLYMER UNLESS OTHERWISE NOTED.
  2. ALL STRIPING SHALL MEET EXISTING STRIPING AT PROJECT TERMINAL POINTS.
  3. SEE ODOT STANDARD DRAWINGS FOR ADDITIONAL DETAILS.
  4. SEE SHEETS 124 -134 FOR SPECIAL SIGN DETAILS.
  5. SEE SHEET 135 FOR OVERHEAD SIGN STRUCTURE DETAILS.
  6. SEE SHEET 123 FOR ROUTE ASSEMBLIES.



FOR DIMENSIONS NOT SHOWN ON THE PLANS FOR PAVEMENT MARKINGS SEE O.D.O.T. STANDARD DRAWING: PM3-1.



DESIGN	RBH	9/13	1-44 & US-62 INTERCHANGE
DRAWN	BWH	9/13	SIGNING AND STRIPING PLANS (SHEET 1 OF 8)
CHECKED	JES	5/16	
APPROVED			
SQUAD	GARVER		STATE JOB NO. 27050(04) SHEET NO. 115